

Bearing technology | Plain bearing | iglidur® W300

d1	d1	d2	d3	b1	b2	Part No.
[mm]	Tolerance ³⁾	[mm]	d13 ³⁾	h13	h13	
15.0		17.0	23.0	20.0	1.00	WFM-1517-20
16.0		18.0	24.0	9.0	1.00	WFM-1618-09
16.0		18.0	24.0	12.0	1.00	WFM-1618-12
16.0		18.0	24.0	17.0	1.00	WFM-1618-17
17.0	+0.032	19.0	25.0	12.0	1.00	WFM-1719-12
17.0	+0.102	19.0	25.0	18.0	1.00	WFM-1719-18
17.0	+0.102	19.0	25.0	25.0	1.00	WFM-1719-25
18.0		20.0	26.0	6.0	1.00	WFM-1820-06
18.0		20.0	26.0	12.0	1.00	WFM-1820-12
18.0		20.0	26.0	17.0	1.00	WFM-1820-17
18.0		20.0	26.0	22.0	1.00	WFM-1820-22
20.0		23.0	30.0	8.0	1.50	WFM-2023-08
20.0		23.0	30.0	8.5	1.50	WFM-2023-085
20.0		23.0	30.0	11.5	1.50	WFM-2023-11
20.0		23.0	30.0	14.5	1.50	WFM-2023-14
20.0		23.0	30.0	16.5	1.50	WFM-2023-16
20.0		23.0	30.0	21.5	1.50	WFM-2023-21
24.0	+0.040	27.0	32.0	10.5	1.50	WFM-2427-10
25.0	+0.124	28.0	35.0	11.5	1.50	WFM-2528-11
25.0		28.0	35.0	16.5	1.50	WFM-2528-16
25.0		28.0	35.0	21.5	1.50	WFM-2528-21
25.0		28.0	32.0	30.0	1.50	WFM-2528-30
25.0		28.0	31.0	13.5	1.50	WFM-252831-13
28.0		30.0	35.0	36.0	1.00	WFM-2830-36
30.0		34.0	42.0	10.0	2.00	WFM-3034-10

d1	d1	d2	d3	b1	b2	Part No.
[mm]	Tolerance ³⁾	[mm]	d13 ³⁾	h13	h13	
30.0	+0.040	34.0	42.0	16.0	2.00	WFM-3034-16
30.0	+0.124	34.0	42.0	26.0	2.00	WFM-3034-26
30.0		34.0	42.0	37.0	2.00	WFM-3034-37
32.0		36.0	40.0	16.0	2.00	WFM-3236-16
32.0		36.0	40.0	26.0	2.00	WFM-3236-26
35.0		39.0	47.0	9.0	2.00	WFM-3539-09
35.0		39.0	47.0	16.0	2.00	WFM-3539-16
35.0		39.0	47.0	26.0	2.00	WFM-3539-26
35.0	+0.050	39.0	50.0	35.0	2.00	WFM-353950-35
38.0	+0.150	42.0	50.0	22.0	2.00	WFM-3842-22
40.0		44.0	52.0	30.0	2.00	WFM-4044-30
40.0		44.0	52.0	40.0	2.00	WFM-4044-40
45.0		50.0	58.0	50.0	2.00	WFM-4550-50
50.0		55.0	63.0	40.0	2.00	WFM-5055-40
50.0		55.0	63.0	50.0	2.00	WFM-5055-50
55.0		60.0	68.0	60.0	2.00	WFM-5560-60
57.0		62.0	67.0	40.0	2.00	WFM-5762-40
60.0	+0.060	65.0	73.0	60.0	2.00	WFM-6065-60
65.0	+0.180	70.0	78.0	60.0	2.00	WFM-6570-60
70.0		75.0	83.0	100.0	2.50	WFM-7075-100
75.0		80.0	88.0	100.0	2.50	WFM-7580-100
80.0		85.0	93.0	100.0	2.50	WFM-8085-100
90.0		95.0	103.0	100.0	2.50	WFM-9095-100
100.0	+0.072	105.0	113.0	100.0	2.50	WFM-100105-100
120.0	+0.212	125.0	133.0	100.0	2.50	WFM-120125-100

³⁾ After press-fit. *Testing methods, page 57*



Available from stock

Detailed information about delivery time online.

www.igus.eu/24



Online ordering

Including delivery times, prices, online tools

www.igus.eu/W300



Ordering note

Our prices are scaled according to order quantities, current prices can be found online.

Discount scaling

1 – 9	50 – 99	500 – 999
10 – 24	100 – 199	1,000 – 2,499
25 – 49	200 – 499	2,500 – 4,999

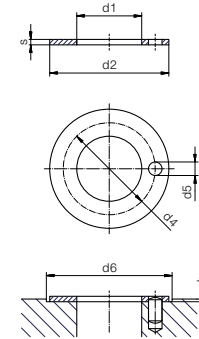
No minimum order value.

No low-quantity surcharges.

Free shipping within Germany for orders above €150.

Bearing technology | Plain bearing | iglidur® W300

Thrust washer (form T)



Dimensions according to ISO 3547-1 and special dimensions



Order example: **WTM-0509-006** – no minimum order quantity.

W300 iglidur® material **T** Thrust washer **M** Metric **05** Inner Ø **d1** **09** Outer Ø **d2** **006** Thickness **s**

d1	d2	d4	d5	h	d6	s	Part No.
+0.25	-0.25	-0.12 +0.12	+0.375 +0.125	+0.2/-0.2	+0.12	-0.05	
[mm]	[mm]	[mm]	[mm]	[mm]	[mm]	[mm]	
5	9.5	⁴⁾	⁴⁾	0.3	9.5	0.6	WTM-0509-006
6	20	13	1.5	1	20	1.5	WTM-0620-015
8	18	13	1.5	1	18	1.5	WTM-0818-015
10	18	⁴⁾	⁴⁾	0.7	18	1	WTM-1018-010
10	18	⁴⁾	⁴⁾	1	18	1.5	WTM-1018-015
12	24	18	1.5	1	24	1.5	WTM-1224-015
14	26	20	2	1	26	1.5	WTM-1426-015
15	24	19.5	1.5	1	24	1.5	WTM-1524-015
16	30	23	2	1	30	1.5	WTM-1630-015
18	32	25	2	1	32	1.5	WTM-1832-015
18	44	30	7	1	44	1.5	WTM-1844-015
20	36	28	3	1	36	1.5	WTM-2036-015
22	38	30	3	1	38	1.5	WTM-2238-015
24	42	33	3	1	42	1.5	WTM-2442-015
26	44	35	3	1	44	1.5	WTM-2644-015
28	40	38	4	1	48	1.5	WTM-2840-015
28	48	38	4	1	48	1.5	WTM-2848-015
32	54	43	4	1	54	1.5	WTM-3254-015
38	62	50	4	1	62	1.5	WTM-3862-015
42	66	54	4	1	66	1.5	WTM-4266-015
48	74	61	4	1.5	74	2	WTM-4874-020
52	78	65	4	1.5	78	2	WTM-5278-020
62	90	76	4	1.5	90	2	WTM-6290-020
82	110	⁴⁾	⁴⁾	1.5	110	2	WTM-82110-020
102	130	⁴⁾	⁴⁾	1.5	130	2	WTM-102130-020
120	150	⁴⁾	⁴⁾	1.5	150	2	WTM-120150-020

⁴⁾ Design without fixing hole