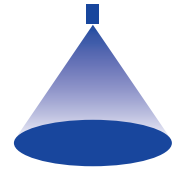


➤ Axiální trysky s rozstříkem plného kužele Series 403

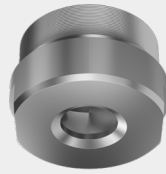


Features:

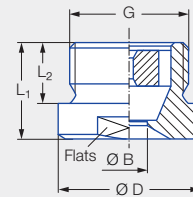
- Extremely uniform liquid distribution

Applications:

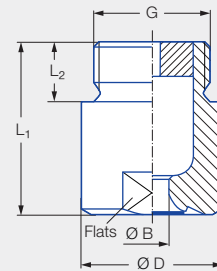
- Surface spraying
- Spraying over packings
- Chemical process engineering
- Cleaning and washing processes
- Cooling



Series 403



90° version



120° version

90° version

Type	G	Dimensions [mm]				Weight [kg]
		L ₁	L ₂	Ø D	Flats	
403.446/403.486	2 1/2 BSPP	52.0	27.0	83.0	75	1.3
403.526	3 BSPP	60.0	30.0	98.0	85	2.0
403.606	3 1/2 BSPP	70.0	32.0	118.0	105	3.6

120° version

Type	G	Dimensions [mm]				Weight [kg]
		L ₁	L ₂	Ø D	Flats	
403.448/403.488	2 1/2 BSPP	124.0	27.0	83.0	75	3.2
403.528	3 BSPP	153.0	30.0	98.0	85	5.4
403.608	3 1/2 BSPP	156.0	32.0	118.0	105	8.3
403.628	4 BSPP	165.0	36.0	128.0	110	9.6

Spray angle	Ordering no.		Bore diameter B [mm]	Narrowest free cross sections Ø [mm]	V̇ water [l/min]							Spray diameter D [mm] (at p = 2 bar)	
	Type	Mat. no.			p [bar]							 H = 500 [mm] H = 1,000 [mm]	
		1Y			0.3	0.5	1.0	2.0	3.0	5.0	7.0		
90°	403.446	●	25.0	12.0	187	230	303	400	470	577	660	1,000	1,780
	403.486	●	29.5	12.0	234	287	379	500	588	721	825	1,000	1,780
	403.526	●	32.0	13.8	295	362	477	630	741	909	1,040	1,000	1,780
	403.606	●	40.0	15.0	468	574	758	1,000	1,176	1,443	1,651	1,000	1,780
120°	403.448	●	25.5	10.0	187	230	303	400	470	577	660	1,700	2,930
	403.488	●	29.5	11.0	234	287	379	500	588	721	825	1,700	2,930
	403.528	●	32.0	15.0	295	362	477	630	741	909	1,040	1,700	2,930
	403.608	●	42.0	12.0	468	574	758	1,000	1,176	1,443	1,651	1,700	2,930
	403.628	●	45.0	15.0	585	718	947	1,250	1,470	1,803	2,063	1,700	2,930

Conversion formula for this series: $\dot{V}_2 = \dot{V}_1 \cdot \left(\frac{p_2}{p_1}\right)^{0.4}$
(≤ 10 bar)

Ordering Type + Material no. = Ordering no.
example: 403.446 + 1Y = 403.446.1Y

Assembly accessories can be found in Chapter 9 "Accessories".